

PRODUCT PRESENTATION

OF Gateway Sourcing Ltd.



We are pleased to introduce Gateway Sourcing Ltd, a garments exporting company based in Bangladesh. Website: <https://info@gwaysltd.com/>

We specialize in sourcing and exporting a wide range of products, including Knitwear, Woven garments, Sweaters, \Lingerie, Home Textiles, Workwear, Backpacks, and Jute products. At Apparel Resource BD, we are committed to quality, reliability, and timely delivery. We would welcome any enquiry, product development, or trial order to demonstrate our capabilities. Should you require samples or developments prior to order placement, we will be happy to support you. relationship with your esteemed company. Thank you for your valuable time and consideration. We look forward to building a successful and long-term business





Item Description: BEACH RESORT 5/5 SHIRT
Fabrication : 100% VISCOSE
Construction: 80x70/30x30
Wt. (GSM): B/W - 4.25 ozs A/W - 100% Viscose



Item Description : 5/5 TROPICAL SHIRT
Fabrication: 100% COTTON NON-STRETCH END ON END
Construction: 40+40SLUBX40+40SLUB 80X60
Wt. (GSM): (2.56oz) 57/58"





BUYER/BRAND : OWN DEVELOPMENT
STYLE NO : LP05
ITEM DESCRIPTION : LADIES FLANNEL PANT
FABRICATION : 100% COTTON FLANNEL
CONSTRUCTION: 16X16/66X58



BUYER/BRAND : OWN DEVELOPMENT
STYLE NO : LP05
ITEM DESCRIPTION : LADIES FLANNEL PANT
FABRICATION : 100% COTTON FLANNEL
CONSTRUCTION: 16X16/66X58





STYLE : MENS FLANNELSHIRT
ITEMS: MEN'S LONG SHIRT
FABRIC: 100% COTTON
GSM: 180
SIZE RANGE: S TO 2XL
COLOR: Y/D CHECK





- ❑ **STYLE : STYLE 205893**
- ❑ **ITEMS: : PUNTOROMALADIESPANT**
- ❑ **FABRIC: 69% VISCOSE 27% POLIAMIDA 4% ELASTANE**
- ❑ **GSM: 300**
- ❑ **COLOR: BLACK**
- ❑ **PRICE : \$6.00 (TARGET CONFIRMED)**



❑ **STYLE:Q3_23_XX
Model 2**

❑ **ITEMS: Ladies Trousers**

❑ **FABRIC: OPT 02 : 100% Cotton Denim** ❑
GSM: 300

❑ **COLOR: BLUE**

❑ **PRICE : Pls Select First**





▮
Patrol

▮
Boys Pant

▮
Cotton

▮
122/128 to 146/152

License: Paw

Style: P 03

DESCRIPTION:

FABRIC: 100%

Size Range:





- ▮ **Style: Men's Knit Denim Pant**
- ▮ **DESCRIPTION: Men's Knit Denim Pant**
- ▮ **FABRIC: Cotton / Poly / Spandex Knit Denim 11 Oz ,**
- ▮ **Size Range: S-XXL**
- ▮ **PRICE: \$ Pls Select First**



DESCRIPTION : LADIES SHORT

COMPOSITION : 98% COTTON 2% ELASTANE

COLOR : BLUE

DESCRIPTION : LADIES
SHORT COMPOSITION : 100%
COTTON

FABRIC WEIGHT :
COLOR : STRIPE PRINT



DESCRIPTION : LADIES PANT

COMPOSITION : 79% COTTON, 19% POLY, 2% ELASTANE

FABRIC WEIGHT : AW 11.0 OZ

COLOR : BLACK



DESCRIPTION : LADIES
JOGGER COMPOSITION : 100%

COTTON FABRIC WEIGHT :
10.00 OZ COLOR : LIGHT WASH



DESCRIPTION : LADIES SKINNY PANT

COMPOSITION : 57% CTN, 22% RECYCLED POLY, 19% RAYON 2%ELASTANE

FABRIC WEIGHT : AW 10.5 OZ

COLOR : INDIGO DENIM



DESCRIPTION : LADIES DENIM PANT

**COMPOSITION : 57% CTN, 22% RECYCLED POLY,
19% RAYON 2%ELASTANE**

FABRIC WEIGHT : AW 11 OZ

COLOR : LIGHT WASH



DESCRIPTION : LADIES SHORT
COMPOSITION : 98% COTTON 2% SPANDEX DENIM
FABRIC WEIGHT :
COLOR : PRINT

DESCRIPTION : LADIES SHORT
COMPOSITION : 100% COTTON
FABRIC WEIGHT :
COLOR : LIGHT WASH



DESCRIPTION : LADIES SHORT
COMPOSITION : 100% COTTON
FABRIC WEIGHT :
COLOR : LIGHT WASH



DESCRIPTION : LADIES SKIRT
COMPOSITION : 77% COTTON, 23% POLYESTER
FABRIC WEIGHT :
COLOR : MEDIUM WASH



DESCRIPTION : LADIES SHORT

COMPOSITION : 76% CTN, 22% POLY, 2% ELASTANE

FABRIC WEIGHT :

COLOR : MEDIUM WASH

DESCRIPTION : LADIES SKIRT

COMPOSITION : 100% COTTON FABRIC

COLOR : BLACK



WOVEN DRESS



- ▶ Style: DC STY 6796102 MM TIE BACK RCH MIDI
- ▶ Fabrication: 100%VISCOSE

WOVEN TOP & BOTTOM



- ▶ Style: IFL LINEN STRIPE TOP & BOTTOM 02
- ▶ Fabrication: 100% Linen Stripe

WOVEN TOP



- ▶ Style: DC Ruffle top
- ▶ Fabrication: 100% cotton Denim, 8 OZ

WOVEN TOP



- ▶ Style: DC SMOKEY TOPS
- ▶ Fabrication: 100% Tencil

DESCRIPTION : LADIES SLEEVE LESS
SHIRT COMPOSITION : 100% COTTON
FABRIC WEIGHT : AW 5.0 OZ
COLOR : MID BLUE

DESCRIPTION : LADIES
SLEEVE LESS SHIRT COMPOSITION : 100%
COTTON
FABRIC WEIGHT : AW 5.0 OZ
COLOR : LT. BLUE





FABRICS INFO:

SHELL: 100% NYLON (20D X 20D).

LINING: 100% POLY 210T TAFFETA.

REAL DOWN: GREY DUCK DOWN,
80% DOWN
20% FEATHER



FABRICS INFO:

SHELL: 100% NYLON (20D X 20D).

LINING: 100% POLY 210T TAFFETA.

REAL DOWN: GREY DUCK DOWN,
80% DOWN
20% FEATHER



FABRICS INFO:

SHELL: 100% NYLON (20D X 20D).

LINING: 100% POLY 210T TAFFETA.

REAL DOWN: GREY DUCK DOWN,
80% DOWN
20% FEATHER



Men's Down Long Jacket

Color: Baze

Material

Shell: 100% POLYESTER PONGEE 140 GSM

Lining: 100% NYLON 40 D





STYLE :MENS WORKWEAR

- ❑ ITEMS: MENS WORKWEAR
- ❑ FABRIC: POLY / COTTON
- ❑ SIZE RANGE: S TO 2XL



Men's Down Long Jacket

Color: Oil green

Material

Shell: 100% POLYESTER PONGEE 140 GSM

Lining: 100% NYLON 40 D

RIB: POLY ELASTANE, 400GSM

Print: HIGH DENSITY GLOSSY



Men's Down Long Jacket

Color: Navy

Material

Shell: 100% POLYESTER PONGEE 140 GSM

Lining: 100% NYLON 40 D





Men's Padded Jacket

Color: Mojave

Material

Shell: 100% Polyamide 300T

Lining: 100% Polyester 210T

RIB: 2X2 95% Polyester - 5% Elastane





Men's Bomber Jacket

Color: Black

Material

Shell: 100% Polyamide Fake Memory

Lining: 100% Polyester 210T Taffeta



Men's Light Padded Jacket

Color: 600 Army

Material

Shell: 50D Cotton feel 100% POLYESTER

Lining: 100% POLYESTER 50D

Sleeve Lining: 210T 100% Polyester

Padding: 120 GSM





Men's Padded Jacket

Color: Black

Material

Shell: 100% Polyamide 300T

Lining: 100% Polyester 210T

RIB: 2X2 95% Polyester - 5% Elastane





Men's padded Jacket

Color: BLACK & ORANGE

Material

Shell: 100% Polyester 380T Taffeta

Lining: 100% Polyester 210T Taffeta

Padding: 140 GSM silk Padding





Men's Padded Jacket

Color: Olive

Material

Shell: 100% Polyamide 300T

Lining: 100% Polyester 210T

RIB: 2X2 95% Polyester - 5% Elastane





Men's Padded Jacket

Color: Olive

Material

● **Shell:** 100% Polyamide 300T

Lining: 100% Polyester 210T

RIB: 2X2 95% Polyester - 5% Elastane





Men's Padded Jacket

Color: Navy

Material

Shell: 100% Polyamide 300T

Shell2: Corduroy

Lining: 100% Polyester 210T





Men's Padded Jacket

Color: Olive

Material

Shell: 100% Polyamide 300T

Lining: 100% Polyester 210T

RIB: 2X2 95% Polyester - 5% Elastane





Men's Swam Sealing Rain jacket

Color: Black

Material

Shell: 100% Polyamide Fake Memory

Lining: 100% Polyester 210T Taffeta

Print: HIGH DENSITY GLOSSY





Style/Reference - 0343

Description - Ladies Round Neck Long Sleeve Pullover

**Composition - 52% Viscose 28% Polyester
20% Nylon**

Gauge - 12



Style/Reference - 0344

Description - Ladies Round Neck Long Sleeve Pullover

Composition - 70% Cotton 30% Nylon

Gauge - 12





License: Miraculous

Style: Mir 02

DESCRIPTION: Girls T

shirt 2 pcs Pack

FABRIC: 100%

Cotton 145 gsm

Size Range: 122/128

to 146/152

PRICE: \$ Pls Select

First





Buyer:	Aldi
Style:	Women short zipp
Description:	Women Half Zip Shirt
Fabric Q:	Q1921
Fabrication:	95%PES 5% ELASTHAN SINGLE JERSEY 160GSM





Buyer:	Hervis
Style:	381765
Description:	Men Half Zip Shirt
Fabric Q:	Q17
Fabrication:	100% PES 150 GSM. CLOSE EYELET OPTIC 58/60 WIDTH T75D/72F+T150D/96F HYDROFIL FINISH





- ▮ **Style: 23SS-2411011**
- ▮ DESCRIPTION: Ladies Top's
- ▮ FABRIC: 100% Cotton Y/D FEEDER STRIPE
200 Gsm S/J
- ▮ **Size Range: S-XL**
- ▮ PRICE: Pls Select First





- ❑ **STYLE : HIT-STRETCH**
- ❑ **ITEMS: MEN'S SS & LS SLV T SHIRT**
- ❑ **FABRIC: 95% COTTON 5% SPANDEX S/J**
- ❑ **GSM: 180**
- ❑ **SIZE RANGE: S TO 3XL**
- ❑ **COLOR: NAVY**
- (❑ **PRICE :**





FABRIC - 85% POLYESTER 15%RAYON
GSM - 185
BUYER - JJ BASICS



FABRIC - 50% POLY 18% RAYON 32% COTTON
GSM - 140
BUYER - JJ BASICS



Style/Reference - 0371

**Description - Ladies High Neck Short Sleeve
Dress**

Composition - 100% Acrylique

Gauge - 3





Description : Ladies top
Fabric: 100 % ctn s/j, 190 GSM
Size range: S- XL





Men's Fighter Zip Hoody.
Fabrication: 100% Cotton F.Terry 280 GSM.



Men's Padded Hoody.
Fabrication: 100% Polyester Taffeta
F.Terry 280 GSM (Sleeves & Hoody)





Men's Sports
Jogger.
Fabrication: 100%
Polyester Jersey
220 GSM



Men's Sports
Jogger.
Fabrication: 100%
Polyester Jersey
220 GSM



Men's Sports
Jogger.
Fabrication: 100%
Polyester Jersey
220 GSM



Ladies Sports Joggers.
Fabrication: 60%
Cotton/40% Polyester
F.Terry 240 GSM.





FABRIC - 65% POLYESTER 35% RAYON
GSM - 160
BUYER - JJ BASICS



FABRIC - 60% COTTON 40% POLYESTER STRIPE
THERMAL
GSM - 180
BUYER - JJ BASICS





SEND DATE	10.01.2023
SAMPLE TYPE	REVISED SMS
ITEMS	MEN'S SHORT
STYLE NO	MODEL 07
SUPPLIER	APPAREL RESOURCE BD/ SOV Trading
COUNTRY OF ORIGIN	Bangladesh
COMPOSITION	100% Cotton French Terry
COLOR	(3 color)18-1666(Fiery Red) 19-0003(Jet Black) 11-0001(Bright White)
GSM	Required 260, Found 258 & 252
SIZE	L
REMARKS	

- STYLE : MODEL 7**
- ITEMS: : MEN'S SHORTS**
- FABRIC: 100% COTTON,FRENCE TERRY**
- GSM: 260**
- COLOR: (4 color) Fiery Red, Jet Black, Cyber Yellow, Bright White**
- PRICE : Pls Select First**





SEND DATE	09.12.2022
SAMPLE TYPE	SMS
ITEMS	MENS TANK TOP
STYLE NO	MODEL 01
SUPPLIER	APPAREL RESOURCE BD/ SOV Trading
COUNTRY OF ORIGIN	Bangladesh
COMPOSITION	100% COTTON S/J
COLOR	18-1664(Fiery Red) 19-0303(Jet Black) 14-0760(Cyber Yellow)
GSM	160
SIZE	L
REMARKS	KINDLY NOTE: THIS OPT MADE BY PRINT, NOT CUT & SEW BY FABRIC

- STYLE : MODEL 1**
- ITEMS: MEN'S TANK TOP**
- FABRIC: 100% COTTON S/J**
- GSM: 160**
- COLOR: (4 color)18-1664(Fiery Red),19-0303(Jet Black),14-0760(Cyber Yellow),11-0601(Bright White)**
- PRICE : Pls Select First**





- ▣ **Style:** Swim short 01
- ▣ **DESCRIPTION:** Swim short with Inside Mesh
- ▣ **FABRIC:** 100% Polyester Micro Satin twill weave , GSM 110-125
- ▣ **Size Range:** S-XXL
- ▣ **PRICE:** \$ Pls Select First





License: Batman

DESCRIPTION: Boys SS PJ 2 pcs pack

FABRIC: 100% Cotton, 145 Gsm S/J

Size Range: 122/128 to 146/152





License: Paw Patrol
Style: P 01
DESCRIPTION: Girls PJ sets
FABRIC: 100% Cotton, 145 Gsm S/J AOP
Size Range: 86/92 to 110/116
PRICE: Pls Select First





BUYER: OSTIN ITEM: Ladies sleeve T-shirt Fabrication:
95% cotton 5% EL Single Jersey. 170/180 GSM – AOP /Size
Range: XS-3XL



BUYER: ERNESTING FAMILY ITEM: Boys long sleeve
Hoody Jacket Fabrication: 60% cotton 40% polyester
Fleece inside brushed 240GSM, Size Range: XS-3XL
BUYER: Ostain ITEM: MENS HOODED JECKET



▮ Miraculous

▮ Girls Dress

▮ Cotton 145 gsm

▮ **Size Range:**
122/128 to 146/152

License:

Style: Mir 01

DESCRIPTION:

FABRIC: 100%





License: Minions
Style: M 01
DESCRIPTION: Girls T Shirt
2 pcs Pack
FABRIC: 100% Cotton 145
gsm S/J
Size Range: 98/104 to
122/128





- ▮ License: Minions
- ▮ Style: M 03
- ▮ DESCRIPTION: Boys
- ▮ Singlets 2 pcs Pack
- ▮ FABRIC: 95% Cotton 5% Elastane 160 gsm
- ▮ **Size Range: 98/104 to 122/128**
- ▮ PRICE: Pls Select First





- License: Minions
- Style: M 04
- DESCRIPTION: Boys Boxer 2 pcs Pack
- FABRIC: 95% Cotton 5% Elastane 160 gsm
- Size Range: 98/104 to 122/128
- PRICE: \$ Pls Select First



BUYER: OSTIN ITEM: Ladies sleeve T-shirt Fabrication: 95% cotton 5% EL Single Jersey. 170/180 GSM AOP /Size Range: XS-3XL



BUYER: OSTIN Item: Ladies sleeve T-shirt Fabrication: 100% cotton S/j 170/180GSM/Size Range: XS-3XL



BUYER: ERNESTING FAMILY Item: BOY
long sleeve T-shirt Fabrication: 100% cotton
S/j 170/180GSM, Size Range: XS-3XL



BUYER: K-MART Fabrication: BUYER: FILA GIRLS LEGGINGS
Fabrication: 95% cotton 5% Elastane S/J 230GSM, Size Range:
XS-3XL ITEM: BOYS LONG PANT 100% cotton Single Jersey.
AOP, Size Range: XS-3XL





- ▮ License: Minions
- ▮ Style: M 02
- ▮ DESCRIPTION: Capri Legging 2 pcs Pack
- ▮ FABRIC: 95% Cotton 5% Elastane 160 gsm
- ▮ **Size Range: 98/104 to 122/128**
- ▮ PRICE: Pls Select First



BUYER: ERNESTING FAMILY ITEM: Boys long sleeve T-shirt Fabrication: 100% cotton Single Jersey Y/D 170/180 GSM /Size Range: XS-3XL



BUYER: Ostin MENS HOODED JECKET Fabrication : 95% COTTON 5% VISCOSE FLEECE 260GSM /MOQ: Size Range: XS-3XL



Buyer/Brand : JOE FRESH

Style No : S2GT025645

Item Description : SW SUNDRESS

Fabrication : SOFT DENIM TWILL 64% COTTON, 36% VISCOSE

Construction: 120 X 66

Wt. (GSM): 160

Item Description : SW SUNDRESS

Fabrication : SOFT DENIM TWILL 64% COTTON, 36% VISCOSE

Construction: 120 X 66

Wt. (GSM): 160





- ❑ **STYLE : WASHINGBAG BIG**
- ❑ **ITEMS: : Washing bag**
- ❑ **FABRIC: 100% Mesh**
- ❑ **GSM: 120 gsm**
- ❑ **COLOR: BLACK**



] **STYLE : TOTE & BREADED BAG**

] **ITEMS : : BAG**

] **FABRIC: 100% COTTON**

] **GSM: 280**

] **SIZE :**

] **COLOR:**

] **PRICE :**





- STYLE : STORAGE BAG**
- ITEMS : : STORAGE BAG**
- FABRIC: COTTON/ NON-WOVEN/ PVC ETC**
- GSM:**
- COLOR:**



- Shell Fabrics : 100% Polyester
240 gsm Velvet fabric
 - Product Size : 45 CM Dia
 - Color : Solid Dyed
 - Inner Filling : 100% Polyester
filling 350 gram
- Price :



- Shell Fabrics : 100% Polyester
240 gsm Velvet fabric
 - Product Size : 45x 45 CM Dia
 - Color : Solid Dyed
 - Inner Filling : 100% Polyester
filling 450 gram
- Price :



- Shell Fabrics : 100% Polyester
240 gsm Velvet fabric
 - Product Size : 30 X 50 CM Dia
 - Color : Solid Dyed
 - Inner Filling : 100% Polyester
filling 350 gram
- Price :





- Fabric specification- 100% polyester Microfiber fabrics
- GSM- 80 GSM
- Color –Multi.
- Inner Filling : 100% Polyester 250 gsm padding.
- Quilting : BOX Quilting
- Workman ship –Self fabrics pipping with all around.



- Fabric specification- 100% polyester Microfiber fabrics
- GSM- 70 GSM
- Color –White.
- Inner Filling : 100% Polyester 250 gsm padding.
- Quilting : BOX Quilting
- Workman ship –Self fabrics pipping with all around.



- Fabric specification-100% Polyester 85 gsm Microfiber.
- GSM- 85 GSM
- Color – Multi
- Inner Filling : 100% Polyester 200 gsm padding.
- Quilting : Box Quilting
- Workman ship – All around regular sewing.





STYLE : BATMAN

FABRIC

SPECIFICATIONS :

100% POLYESTER,
MICROFIBER 85 GSM

FILLING : 100%

POLYESTER, 185 GSM
PADDING

SIZE : TWIN & KING

COLOR : BLACK

Price:



STYLE : MARILYN

FABRIC

SPECIFICATIONS :

100% POLYESTER,
MICROFIBER 85 GSM

FILLING : 100%

POLYESTER, 185 GSM
PADDING

SIZE : QUEEN

COLOR : MULTI

Price:



STYLE : WONDER

WOMEN

FABRIC

SPECIFICATIONS :

100% POLYESTER,
MICROFIBER 85 GSM

FILLING : 100%

POLYESTER, 185 GSM
PADDING

SIZE : TWIN & KING

COLOR : MULTI

Price:





Recycle Cotton, Organic Cotton Tote Bag





Duffel/ Athlete, Waist, Pouch, Messenger, Laptop, School Bag,





Jute and Jute Cotton Combo Tote Bag





Item: Beach bag
Size: 60x35x30cm
Material: 100% Jute
Buyer: German importer.



Item: Beach bag
Size: 60x35x30cm
Material: 100% Jute
Buyer: German importer.



Item: Beach bag
Size: 31x35x40cm
Material: 100% Jute
Buyer: German importer.



Item: Beach bag
Size: 58x38cm (strap-27cm)
Material: 100% Jute
Buyer: German importer.



Item: Beach bag
Size: 65x40x30cm
Material: 100% Jute
Buyer: German importer.



Item: Beach bag
Size: 60x35x30cm
Material: 100% Jute
Buyer: German importer.



Apron, Table Cloth, Runner, Tea-towel, Napkin, Curtain Items





Curtain, Woven Towel, Beach Poncho



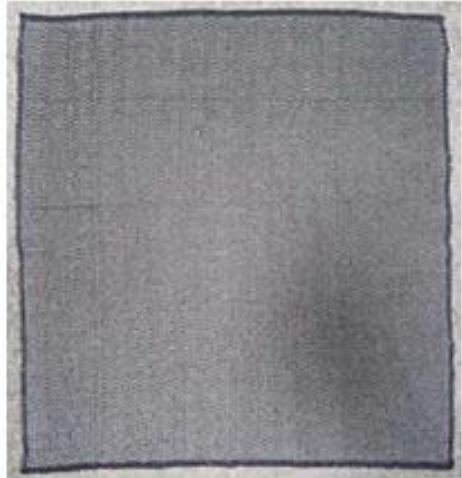


KITCHEN APRON



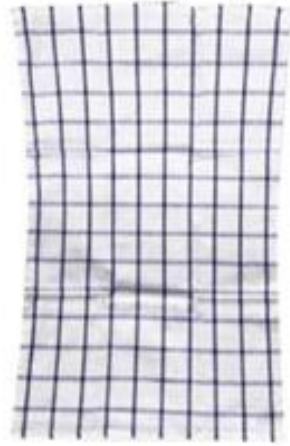


COTTON , JUTE ----MAT, RUG,CARPET LOOM PATTERN





TEA-TOWEL





TERRY BATH TOWEL, DISH WASHER





Cushion, Cushion Cover, Tracking Chair Cushion



Comforter, Duvet Cover, Fitted Sheet, Blanket, Plain Sheet



COTTON ROOM SLIPPER---V-STRAP , OPEN TOE



Item: COTTON ROOM SLIPPER (V-STRAP+OPEN TOE)
Code : NCW-002
Material: 90% Cotton 10% Other.
Size: S+M+L



TABLE PLACEMAT—COTTON, JUTE, SEAGRASS



Cotton Rug, Jute Rug, Area Rug, Doormat, Bath & Placemat



Storage, Laundry, Kitchen, Planter, Deco, Pet, Fruits, Gift etc. Baskets





**BUYER: H&M,
ITEM: BRA – SINGLE PC PACK**

Fabrication:

92% Nylon 8% Elastane – Micro Fabrics 160
GSM

**BUYER: HUNKIMULAR,
ITEM: Push up Bra**

Fabrication:

92% Polyester 8% Elastane – Micro Fabrics 160
GSM



BUYER: AURA

ITEM: PLUNGE BRA-Single Pc Pack

**FABRICATION: 90% POLYESTER 8%
ELASTANE –MICRO FABRICS 160 GSM**



BUYER: HUNKIMULAR

ITEM: MOLD BRA

Fabrication:

92% Polyester 8% Elastane – Micro Fabrics 160 GSM





BUYER: WAL-MART.

ITEM: Wear Bra

Fabrication:

90% cotton 10% Single Jersey. GSM-200.

BUYER: H&M

ITEM: GIRLS BODY BRA

Fabrication:

95% COTTON 15% SPANDEX SINGLE
JERSEY GSM- 170.





BUYER : SAPPH

STYLE : MADISON PUSH UP BRA

TYPE: SOLID

LACE COMPOSITION: 82% POLYAMIDE, 18% SPANDEX



BUYER : SAPPH

STYLE : MADISON HIGH BRAZILLIAN

TYPE: SOLID

LACE COMPOSITION: 82% POLYAMIDE, 18% SPANDEX





BUYER: AUCHAN

ITEM: Swimwear , TOP+BOTTOM

Fabrication:

85% Polyester 15% Elastane 180 GSM

BUYER-AURA

ITEM: SPORTS BRA

FABRICATION: 90% POLYESTER 10% ELASTANE 180GSM.





SAMPLE TYPE	SMS
ITEMS	LADIES BRIEF
STYLE NO	MODEL 9
SUPPLIER	APPAREL RESOURCE BD/ SDV Trading
COUNTRY OF ORIGIN	Bangladesh
COMPOSITION	95% COTTON 5% ELASTANE S/J
COLOR	18-1664(Fiery Red) 14-0760 Cyber Yellow 19-0303(Jet Black) 11-0601 Bright White
GSM	160
SIZE	M
REMARKS	

- **STYLE : MODEL 9**
- **ITEMS: : LADIES BRIEF**
- **FABRIC: 95% COTTON 5% ELASTANE S/J**
- **GSM: 160**
- **COLOR: (4 color)(FieryRed), Jet Black), (Cyber Yellow)(Bright White)**
- **PRICE : Pls Select First**



BUYER: MILES -ALDI

ITEM: BIKINI SETS (TOP+BOTTOM)

Fabrication:

80% NYLON 20% Elastane 150 GSM. AOP.

BUYER: TEZENIS
ITEM: GILRS SOFT BRA.

Fabrication:
93% cotton 7% Elastane S/J 160GSM. AOP.





- ▮ **Style: Ladies Tank top**
- ▮ **DESCRIPTION: 95% Polyester 5% Elasthan**
- ▮ **FABRIC: 95% Polyester 5% Elasthan 160 gsm**
- ▮ **Size Range: S-XL**
- ▮ **PRICE: Pls Select First**





SAMPLE TYPE	SMS
ITEMS	MENS BOXER
STYLE NO	MOEEL 2
SUPPLIER	APPAREL RESOURCE BDI SDV Trading
COUNTRY OF ORIGIN	Bangladesh
COMPOSITION	95% COTTON 5% ELASTANE SJJ
COLOR	18-1664(Fiery Red) 14-0760 Cyber Yellow 19-0303(Jet Black) 11-0601 Bright White
GSM	160
SIZE	L
REMARKS	

- STYLE : MODEL 2**
- ITEMS: : MEN'S BOXER**
- FABRIC: 95% COTTON 5% ELASTANE S/J**
- GSM: 160**
- COLOR: (4 color)18-1664(Fiery Red),19-0303(Jet Black),14-0760(Cyber Yellow)11-0601(Bright White)**
- PRICE : Pls Select First**



BUYER: CLUB TEX

ITEM: Girls Bra

Fabrication:

93% cotton 7% Elastane Single Jersey. 150 GSM



BUYER –DEVENHAMS ITEM – LADIES LACE PANTY
FABRICATION – 95% cotton 5% spandex S/J 160gsm /Size
Range: XS-3XL





BUYER –DEVENHAMS ITEM – LADIES LACE PANTY
FABRICTION – 88% POLYAMIDE 12% ELASTANE
LACE 140 GSM/, Size Range: XS-3XL



BUYER –DEVENHAMS ITEM – LADIES LACE PANTY
FABRICTION – 85% POLYAMIDE 15% ELASTANE LACE 140
GSM, Size Range: XS-3XL





BUYER –Women Secret ITEM – LADIES PANTY
FABRICTION – 95% cotton 5% El S/J 160GSM – AOP
Size Range: XS-3XL



UYER –DEVENHAMS ITEM – LADIES LACE PANTY
FABRICTION – 88% POLYAMIDE 12% ELASTANE S/J 140
GSM, Size Range: XS-3XL

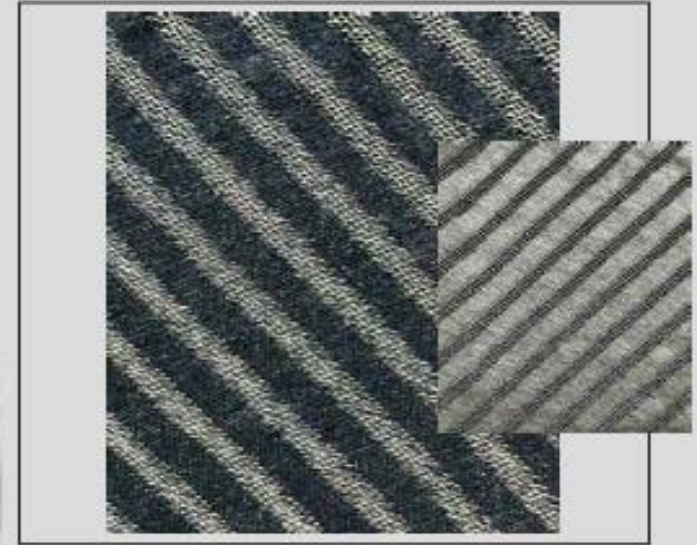




BUYER –WOMEN SECRET ITEM –
7PCS PACK BRIEF FABRICATION –
95% COTTON 5% ELASTANE S/J
160 GSM Size Range: XS-3XL



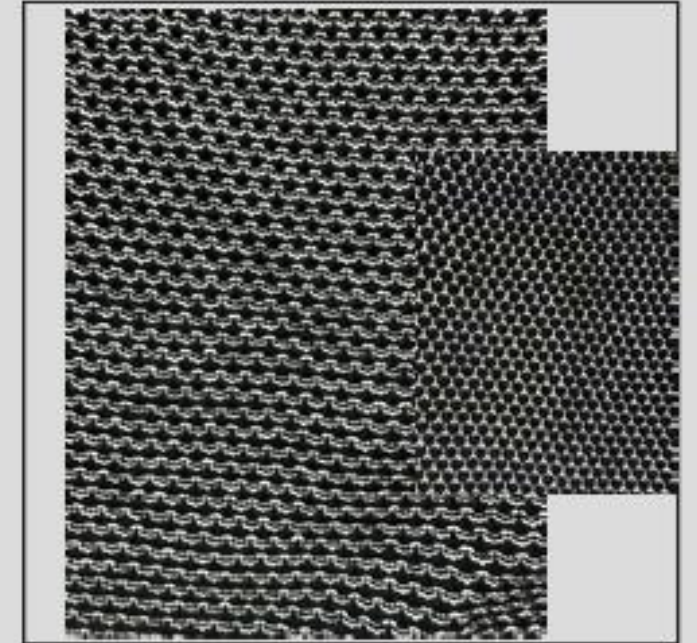
REF: MFM-KS2601
QUALITY: 100% COTTON



★ Any quality can apply
on Surface texture.



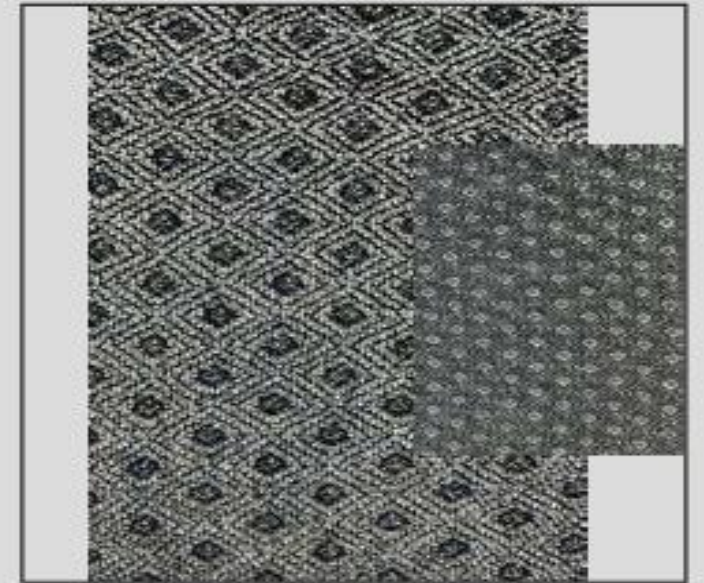
REF: MFM-KS2602
QUALITY: 100% COTTON



★ Any quality can apply
on Surface texture.



REF: MFM-KS2603
QUALITY: 100% COTTON



★ Any quality can apply
on Surface texture.



REF: MFM-KS2607
QUALITY: 100% COTTON



★ Any quality can apply
on Surface texture.





Style/Reference - GBA 15

Description - BABIES PULLOVER

Composition - 100% ACRYLIQUE

Gauge - 7



Style/Reference - GBA 16

**Description - BABIES LONG
ZIPPER CARDIGAN**

Composition - 100% ACRYLIQUE

Gauge - 5



REF: MFM-KS2613

QUALITY: 100% COTTON



★ Any quality can apply
on Surface texture.





- **STYLE: DES 21940**
- **DESCRIPTION: LADIES XMAS JUMPER**
- **FABRIC: 100%ACRYLIC, 2/32**
- **GAUGE: 7**
- **WEIGHT: 10.50 LBS/DZ**
- **PRICE:**



REF: MFM-KS2619
QUALITY: 100% COTTON



REF: MFM-KS2622
QUALITY: 100% COTTON



★ Any quality can apply
on Surface texture.



REF: MFM-KS2624
QUALITY: 100% COTTON



REF: INC-WYA-606
QUALITY: 50%ACRYLIC
28%POLYESTER 22%NYLON





Style:230446

Composition:52% VISCOSE 28%
POLYESRER 20% NYLON

Weight:432 GRAM

Sample Size: M

Gauge: 12 GG

Style:230920



Composition:60% COTTON 40
ACRYLIC 2/16

Weight:590 GRAM

Sample Size: M

Gauge:3GG-6PLY



Style:230259

Composition:70% VISCOSE
30%NYLON

Weight:600 GRAM

Sample Size:M

Gauge:12 GG



Style: 230566

Composition: 100% COTTON

Weight: 505 GRAM

Sample Size: M

Gauge: 5GG



Style:230967

Composition:100% COTTON

Weight:340 GRAM

Sample Size:M

Gauge:5GG



Style:230972

Composition:100% COTTON 2/20

Weight:415 GRAM

Sample Size:M

Gauge:5GG 4PLY



Style:230801

**Composition:100% COTTON +
LUREX**

Weight:480 GRAM

Sample Size: M

Gauge:5GG



Style:230681

Composition:70% VISCOSE
30%NYLON

Weight:630 GRAM

Sample Size:M

Gauge:12GG



❖ **Style- @Prime-22 .**

- ❖ Item Description : Men's Half Zip long sleeve pullover .
- ❖ 07 GG .
- ❖ Composition : 100% Cotton .
- ❖ Weight : 480 Grm .



❖ **Style- @Prime-23 .**

- ❖ Item Description : Half Turtleneck Brown Knitwear Sweater
- ❖ 07 GG .
- ❖ Fabric Composition : 90% Acrylic 10% Polyamide
- ❖ Weight : 570 Grm .



❖ **Style- @Prime-24 .**

- ❖ Item Description : Men's Button Cardigain .
- ❖ 12 GG .
- ❖ Fabric Composition : 100% Cotton .
- ❖ Weight : 480 Grm .



Style – W21-650MKNIT
Yarn – 100% acrylic
Gauge – 7
Weight-10.50lbs (app.)
Size – S-M-L-XL



Style – BONO
Yarn – 100% cotton
Gauge – 7
Weight-13.00 lbs (app.)
Size – S-M-L-XL



Buyer	Common peope
Style ref. No.	LADIES PULLOVER
Color	Badge
Fabrication	60% Cotton 40% Acrylic
Weight	400 Grms
Guage	5gg



In viscose or polyester yarn



Style/Reference - GCH 36
**Description - CHILDREN ROUND
NECK PULLOVER**
**Composition - 65% NYLON
FEATHER 35% ACRYLIQUE**
Gauge - 5

Style/Reference - GCH 35
**Description - CHILDREN ROUND
NECK PULLOVER**
Composition - 100% ACRYLIQUE
Gauge - 12





- ▮ **STYLE: XMAS PRECIO**
- ▮ **DESCRIPTION: MEN'S CHRISTMAS JUMPER**
- ▮ **FABRIC: 100%ACRYLIC, 2/32**
- ▮ **GAUGE: 7**
- ▮ **WEIGHT: 12.00 LBS/DZ**
- ▮ **PRICE:**





Style- MallieSZ Pullover .

- ❖ Item Description : Women's Knitted Sweater .
- ❖ Guage: 07GG .
- ❖ Composition : 68% Polyacryl, 28% Polyester, 4% Elastan.
- ❖ Weight : 550 Grm .



Style- MallieSZ Pullover .

- ❖ Item Description : Women's Knitted Sweater .
- ❖ Guage: 07GG .
- ❖ Composition : 68% Polyacryl, 28% Polyester, 4% Elastan.
- ❖ Weight : 550 Grm .



❖ Style- MilaSZ Rollneck Pullover .

- ❖ Item Description : Brown turtleneck sweater .
- ❖ Guage: 12 GG .
- ❖ Composition : 80% Viscose, 20% Polyamide
- ❖ Weight : 350 Grm .

Thank You !

